

WELCOME TO SKIBBEREEN COMMUNITY SCHOOL



Choosing an appropriate second level school is one of the most important decisions both parents and children will ever make. We, at Skibbereen Community School are delighted to take this opportunity to introduce you to our school and to thank you for your interest.

Established in 2016, Skibbereen Community School is a multi-denominational, co-educational school, built upon the Catholic education traditions of the Mercy Sisters, De la Salle Brothers, the Diocese of Cork and Ross and the inclusive ethos of Cork Education and Training Board.

As a school community we strive to develop a community of learners where our students, ranging from the academically gifted to those who may experience some difficulties with certain aspects of learning, fully achieve their potential in all areas of school life.

Furthermore, we believe in nurturing self-belief in our students thereby, laying strong foundations for their future life paths. To achieve this the school offers a dedicated and committed staff, a wide range of subjects, an abundance of extra-curricular opportunities and modern State of the Art facilities. In addition, the school has a well-structured student support system designed to assist your son/ daughter through the trials and tribulations of second level education.

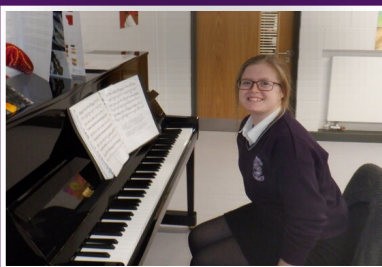
In our school we pride ourselves on developing warm positive relationships between all members of our school community, students, parents, staff and management. We hope that your son/ daughter will be content within our school community and that they will be encouraged to experience challenges and grow to maturity.

What follows is intended to give you some impression of Skibbereen Community School, our ethos and values and what we have to offer. Please feel free to seek further information about our school by logging onto our website (www.skibbereencommunityschool.ie) and registering for our Virtual Open Evening.

Mr. Anton O'Mahony
Principal



EXCELLENCE IN EDUCATION WITHIN A SAFE, CARING & HAPPY ENVIRONMENT



As Symbolised by Our Crest,
Our School is A Safe Harbour for
Students, from which The Ebb and Flow
of Life Journeys begin.
Such Journeys have Humble Beginnings
but finish with Great Opportunities
On The Horizon.

COMMENTS FROM 1ST YEAR'S

Before I started in 1st year, I was worried in case I would find the work hard and not do well. It turns out I'm doing well and the people are really nice. I made lots of new friends. I really like 1st year.



When I first came into the school I was really worried that I would get lost. That didn't happen though because on the first day they gave us our homework journals with a map inside and that was all good.



When I first got came into first year, I thought the school was massive and I would never find my way around but in the first week you get to know the school and it actually feels really small

You'll make friends easily even if you come in knowing nobody.

I like that there are different subjects everyday.

The school is very welcoming. If anything goes wrong, someone will fix it.

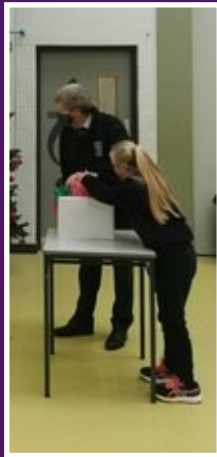


I was really nervous starting 1st year as I hadn't seen some of my friends in a long time but it's great, I see all my old friends and I have loads of new friends now too.

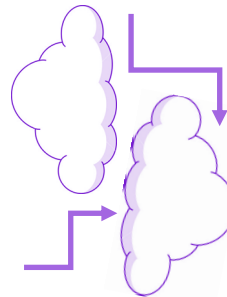
We use MS TEAMS and I love it, we get our homework on it and can send our work to our Teachers. It's really cool !



OUR AIMS



To facilitate the personal, **social, spiritual, intellectual, emotional and physical development** of each student in reaching their full potential.



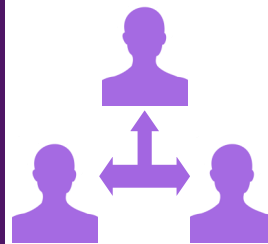
To create an **inclusive, safe, caring and happy environment** open to the wonder of learning.



To nurture the **self-belief** of each student.



To develop our school as a **community of learners.**



To nurture **active partnership** between parents/guardians, students, staff and the **wider Community.**

DEVELOPING A COMMUNITY



EXCELLENCE & ACHIEVEMENT



TEAMWORK



FUN



SELF BELIEF



CARE



CURRICULUM

Skibbereen Community School offers a diverse range of subjects as part of a balanced curriculum designed to prepare students for life in the 21st Century.

All students follow a six-year cycle, three at junior level and three at senior level, one of which is spent in Transition Year. Students are also afforded the opportunity to follow the Leaving Cert Vocational Programme and the Junior Certificate School Programme.

JUNIOR CYCLE

The Junior Cycle is designed to place the student at the centre of the learning, with each student having access to a varied curriculum of knowledge, understandings, skills and values. This curriculum will follow broadly based programmes of subjects, short courses, other learning experiences and well-being.

Achievements at Junior Cycle will be assessed through a dual approach of classroom based assessment across the three years and a final externally assessed, state certified examination designed to enable an appropriate balance between preparing students for examination and facilitating creative thinking and engaged learning for students.

First Year Curriculum:

In 1st year, students will study all the following subjects for the full year.

- ◇ Irish, English, Maths, French and Spanish, History, Science,
- ◇ Business, Geography, Visual Art, Home Economics, Music, Engineering, Technical Graphics, Woodwork.

Other Learning Experiences/ Well-being:

Computers, Mentoring, Physical Education, Religious Education.

Second/Third Year Curriculum:

At the end of 1st year, students continue to study a mixture of core subjects and a number of optional subjects chosen by them along with other learning opportunities and short courses.

Core Subjects:

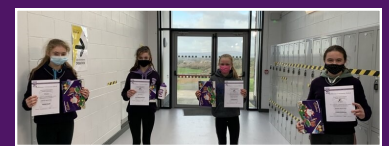
- ◇ Irish, English, Maths, French or Spanish, Science.

Optional Subjects:

- ◇ French or Spanish, Art, Business, Geography, History, Home Economics, Engineering, Music, Technical Graphics, Woodwork.

Short Courses:

Physical Education, CSPE, SPHE.



SENIOR CYCLE

The aims of the senior cycle programme are to provide continuity and progression from the experience of Junior Cycle and Transition Year, to prepare students for the requirements of work or further education and to develop the capacity for self-directed learning. Students study a mixture of core and optional subjects chosen by them.

Core: Irish, English, Maths, Guidance, Physical Education, Religious Education,

Optional: Accounting, Agricultural Science, Art, Biology, Business, Chemistry, Construction, Design and Communications Graphics, Economics, Engineering, French, Geography, History, Music, Physics, Social and Scientific, Spanish

LEAVING CERTIFICATE VOCATIONAL PROGRAMME

Pupils are offered the opportunity to follow the LCVP Programme. This programme is designed to combine the academic strengths of the present Leaving Certificate with a new and dynamic focus on self-directed learning, enterprise, work and the community. Students taking LCVP, study seven Leaving Certificate subjects in addition to two link modules; Preparation for the World of Work and Enterprise Education. Assessment is by portfolio of coursework and written examination.

TRANSITION YEAR

Transition Year is a one-year school based programme designed to facilitate a smooth transition between the more dependent learning of the Junior Cycle and the more independent, self-directed learning of the Senior Cycle. It is a year that allows students to mature, explore and build resilience.



NURTURING SELF-BELIEF



EXTRA-CURRICULAR ACTIVITIES

In Skibbereen Community School, it is our belief that activities outside of contact class time are of immeasurable value in the overall education and development of our students. These activities help to develop social skills, leadership skills, self-discipline and the ability to work as part of a team.

Our extra-curricular programme is constantly evolving to suit the needs of our student body. We offer many opportunities, ranging from games and sports, through drama and music to debating and school tours.

AT PRESENT THESE ACTIVITIES INCLUDE:

- ◇ Badminton
- ◇ Basketball
- ◇ Chess
- ◇ Drama
- ◇ Debating
- ◇ Football
- ◇ Hurling
- ◇ Music
- ◇ Robotics
- ◇ Rowing
- ◇ Rugby
- ◇ Sailing
- ◇ Show-jumping
- ◇ Social Justice
- ◇ Soccer
- ◇ Student Exchanges
- ◇ Table Tennis



FACILITIES



Modern class-rooms and specialised, state of the art equipment provide the setting for educational excellence and for exploring the wonders of learning.

- ◇ 26 General Classrooms
- ◇ 2 Woodwork/Construction rooms
- ◇ 2 Metalwork/Engineering rooms
- ◇ 2 Technical Drawing/DCG Rooms
- ◇ Lecture theatre
- ◇ Religion and mediation area
- ◇ 2 Arts Craft and design room
- ◇ 2 Home Economics rooms
- ◇ 5 Science Laboratories
- ◇ 3 fully equipped Computer Laboratories
- ◇ Language Laboratory
- ◇ Library
- ◇ Performance area
- ◇ PE Hall
- ◇ Special Needs Suite
- ◇ Music Room
- ◇ Full size pitch
- ◇ 5 Outdoor ball courts

All classes are equipped with modern ICT facilities

SOCIAL SPACES Recreation and socialising provides an important balance to learning and also forms part of the student's social development. Our modern indoor- and outdoor spaces provide safe spaces conducive to student interaction.

CANTEEN The school has the services of a full canteen which provides a mixture of hot and cold food and drinks.



INCLUSIVE, SAFE, CARING & HAPPY ENVIRONMENT



STUDENT SUPPORT STRUCTURES

The needs of each individual student are of paramount importance to the school. Each member of staff strives to ensure that each student is cherished and their contribution to the life of the school is valued.

The structures overleaf are designed to assist in making real these principles.

Guidance

The Guidance Counsellors work with all year groups assisting with subject choices, college applications, career options and confidential personal counselling when students are concerned about something or may be experiencing a personal crisis.

Chaplaincy

Our school has a full time Chaplain service. The Chaplain is responsible for the schools Religious and Liturgical celebrations as well as accompanying students on their journey through the school offering spiritual guidance and assistance particularly in times of difficulty.

Year Head

The Year Head oversees the welfare of a year group so that both learning and personal development are supported. The Year Head is responsible for the spirit, organisation, behaviour and progress of the year group and each individual student within it.

Care Team

The care team meets once a week to discuss and monitor the needs of students particularly those who may be experiencing difficulties at any particular time. The care team comprises of the Principal, Deputy Principal, Guidance staff, Learning Support Co-ordinator, Chaplain, Year Heads and SCP staff.

Home-School Liaison

Our home school liaison teacher provides a link between home and school working in particular with those students who find attendance in school a struggle.

Special Educational Needs/ Learning Support

The staff of Skibbereen Community School work as a team to ensure that each student is given the opportunity to achieve their potential.

The school has a very active Learning Support Department who support the classroom teachers in their work. This department assists students ranging from those with specific learning difficulties right through to those who may be challenged by a particular area in any of the subjects offered.

Learning Resource Centre As part of the SEN department the school has a purpose built special educational needs suite which allows us to cater for students with more specific needs including those on the Autistic Spectrum. As well as having their own designated base classrooms, facilities and garden, these students may have the opportunity to integrate into various mainstream classes as their ability allows.

School Completion Program

The school has access to the support services of the School Completion Program. SCP gives both social and academic support through 'In-School', 'After-School' and 'Holiday Time' activities, helping to make school a more manageable and positive place for those who may find it challenging.

Student Support Team

Made up of representatives of all of the above along with Principal and Deputy Principals who meet each week to discuss supports for students in need.